



== IT'S ALL ABOUT ==
DETAILS



IT'S ALL ABOUT DETAILS

Lâg Guitars provide an assertive and sharp aesthetic featuring the elegance of the French Lutherie process and the Algam Design Team. A real obsession with attention to detail has propelled the guitars of the Master Luthier Michel Lâg far beyond the French borders and into the international spotlight. Due to their remarkable acoustic and aesthetic qualities, they continue to collect international awards and praise from around the industry.



4

TRAMONTANE

66 SERIES	PAGE 6
77 SERIES	PAGE 8
80 SERIES	PAGE 10
100 SERIES	PAGE 12
200 SERIES	PAGE 14
500 SERIES	PAGE 16

18

OCCITANIA

300 SERIES	PAGE 20
400 SERIES	PAGE 22

24

IMPERATOR

66 SERIES	PAGE 26
100 SERIES	PAGE 28
200 SERIES	PAGE 30
3000 SERIES	PAGE 32

ARKANE

66 SERIES	PAGE 36
100 SERIES	PAGE 38
200 SERIES	PAGE 40
3000 SERIES	PAGE 42

46

WORKSHOP FRANCE

48

ARTISTS



Tramontane[®]

THE SWEET ESCAPE

Chosen as the Acoustic Guitar of the Year numerous times, the Tramontane range continues to seduce guitarists of all levels around the world. From the first creative sketch, to the ultimate finish, the precision, refinement and attention to detail of the Tramontane range provides a superior acoustic guitar.

Definitively conceived to be played on stage, the acoustic/electric models in the Tramontane range utilize the DirectLâg Plus and StudioLâg Plus preamp technologies for a professional and easy to use amplification solution that sounds excellent.



66

Tramontane®

66 SERIES

SPECIFICATIONS

Top: Sitka Spruce
 Back & Sides: Honey Mahogany
 Bindings: Black & Ivory
 Finish: High gloss

Neck: Mahogany / French Satin finish
 Trussrod: 2 Way System
 Fretboard: Indonesian Rosewood
 Frets: 20 / Silver-Nickel (18 on Nylon models)
 Scale: 650mm - 25.60"

Headstock: Mahogany
 Machine Heads: Die-cast / Satin black
 Nut: Black Graphite / 43mm - 1.69"
 (48mm 1,89" on Nylon and D12 models)

Saddle: Compensated black graphite / 72mm - 2.83"
 (Flat 80mm - 3.15" on Nylon Models)
 Bridge: Indonesian Rosewood

(Acoustic / Electric models)
 Pickup: Piezo NanoFlex
 Preamp: DirectLag Plus Folk & Nylon

Strings: D'Addario EXP

DREADNOUGHT

GLA T66D	NATURAL
GLA TL66D	LEFT-HANDED - NATURAL
GLA T66D12	12 STRINGS - NATURAL

DREADNOUGHT CUTAWAY

GLA T66DC	NATURAL
-----------	---------

DREADNOUGHT CUTAWAY ELECTRO

GLA T66DCE	NATURAL
GLA TL66DCE	LEFT-HANDED - NATURAL
GLA T66D12CE	12 STRINGS - NATURAL

AUDITORIUM

GLA T66A	NATURAL
----------	---------

AUDITORIUM CUTAWAY ELECTRO

GLA T66ACE	NATURAL
------------	---------

AUDITORIUM NYLON

GLA TN66A	NATURAL
-----------	---------

AUDITORIUM NYLON CUTAWAY ELECTRO

GLA TN66ACE	NATURAL
GLA TNL66ACE	LEFT-HANDED - NATURAL





Tramontane®

77 SERIES

SPECIFICATIONS

Top: Mahogany
 Back & Sides: Mahogany
 Bindings: Black & Ivory
 Finish: French satin / Dark Mahogany

Neck: Mahogany / French Satin finish
 Trussrod: 2 Way System
 Fingerboard: Indonesian Rosewood
 Frets: 20 / Silver-Nickel
 Scale: 650mm - 25.60"

Headstock: Mahogany
 Machine Heads: Die Cast / Satin Black
 Nut: Black Graphite / 43mm - 1.69"

Saddle: Compensated black graphite / 72mm - 2.83"
 Bridge: Indonesian Rosewood

(Acoustic / Electric models)
 Pickup: Piezo NanoFlex
 Preamp: DirectLâg Plus

Strings: D'Addario EXP

DREADNOUGHT	
GLA T77D	NATURAL
DREADNOUGHT CUTAWAY ELECTRO	
GLA T77DCE	NATURAL
PARLOR ELECTRO	
GLA T77PE	NATURAL
GLA TL77PE	LEFT-HANDED - NATURAL
JUMBO	
GLA T77J	NATURAL
JUMBO ELECTRO	
GLA T77JCE	NATURAL



80

Tramontane[®]

80 SERIES

SPECIFICATIONS

Top: Solid Sitka Spruce
 Back & Sides: Mahogany
 Bindings: Black & Ivory
 Finish: High Gloss

Neck: Mahogany / French satin finish
 Trussrod: 2 Way System
 Fingerboard: Indonesian Rosewood
 Frets: 20 / Silver-Nickel
 Scale: 650mm - 25.60"

Headstock: Mahogany
 Machine Heads: Die cast high precision / 1:18 Ratio / Satin Black
 Nut: Black graphite / 43mm - 1.69"

Saddle: Compensated black graphite / 72mm - 2.83"
 Bridge: Indonesian Rosewood

(Acoustic / Electric models)
 Pickup: Piezo NanoFlex
 Preamp: DirectLåg Plus

Strings: D'Addario EXP

DREADNOUGHT

GLA T80D NATURAL

DREADNOUGHT CUTAWAY ELECTRO

GLA T80DCE NATURAL

AUDITORIUM

GLA T80A NATURAL

AUDITORIUM CUTAWAY ELECTRO

GLA T80ACE NATURAL

GLA TL80ACE LEFT-HANDED - NATURAL



1000

Tramontane®

100 SERIES

SPECIFICATIONS

Top: Solid Red Cedar
 Back & Sides: Mahogany
 Bindings: Mahogany, maple and black
 Finish: High Gloss

Neck: Mahogany / French satin finish
 Trussrod: 2 Way System
 Fingerboard: Indonesian Rosewood
 Frets: 20 / Silver-Nickel
 Scale: 650mm - 25.60"

Headstock: Indonesian Rosewood / Maple logo inlay
 Machine Heads: Die cast high precision / 1:18 Ratio / Satin Black
 Nut: Black graphite / 43mm - 1.69"

Saddle: Compensated black graphite / 72mm - 2.83"
 Bridge: Indonesian Rosewood

(Acoustic / Electric models)
 Pickup: Piezo NanoFlex
 Preamp: StudioLag Plus

Strings: D'addario EXP / Savarez

DREADNOUGHT

GLA T100D NATURAL
 GLA T100D-BLK BLACK
 GLA T100D-BRS BROWN SHADOW

DREADNOUGHT CUTAWAY ELECTRO

GLA T100DCE NATURAL
 GLA T100DCE-BLK BLACK
 GLA TL100DCE-BLK LEFT-HANDED - BLACK
 GLA T100DCE-BRS BROWN SHADOW

AUDITORIUM CUTAWAY ELECTRO

GLA T100ACE NATURAL
 GLA T100ACE-BLK BLACK
 GLA T100ACE-BRS BROWN SHADOW

AUDITORIUM SLIM CUTAWAY ELECTRO

GLA T100ASCE NATURAL
 GLA T100ASCE-BLK BLACK
 GLA T100ASCE-BRS BROWN SHADOW
 GLA TL100ASCE-BRS LEFT-HANDED BROWN SHADOW





2000

Tramontane[®]

200 SERIES

SPECIFICATIONS

Top: Solid Red Cedar
 Back & Sides: Mahogany
 Bindings: Rosewood & maple
 Finish: French Satin

Neck: Mahogany / French satin finish
 Trussrod: 2 Way System
 Fingerboard: Indonesian Rosewood
 Frets: 20 / Silver-Nickel
 Scale: 650mm - 25.60"

Headstock: Indonesian Rosewood / Maple logo inlay
 Machine Heads: Die Cast high precision / 1:18 Ratio / Satin Black
 Nut: Black graphite / 43mm - 1.69"

Saddle: Compensated black graphite / 72mm - 2.83"
 Bridge: Indonesian Rosewood

(Acoustic / Electric models)
 Pickup: Piezo NanoFlex
 Preamp: StudioLåg Plus

Strings: D'addario EXP / Savarez

DREADNOUGHT

GLA T200D NATURAL

DREADNOUGHT CUTAWAY ELECTRO

GLA T200DCE NATURAL

AUDITORIUM

GLA T200A NATURAL

AUDITORIUM CUTAWAY ELECTRO

GLA T200ACE NATURAL

GLA TL200ACE LEFT-HANDED - NATURAL



500

Tramontane[®]

500 SERIES

SPECIFICATIONS

Top: Solid Sitka Spruce
 Back & Sides: Rosewood
 Bindings: Maple & Black
 Finish: High Gloss

Neck: Mahogany / French satin finish
 Trussrod: 2 Way system
 Fingerboard: Ebony
 Frets: 20 / Silver-Nickel
 Scale: 650mm - 25.60"

Headstock: Ebony / Maple logo inlay
 Machine Heads: Die Cast High Precision / 1:18 Ratio / Satin Black
 Nut: Black graphite / 43mm - 1.69"

Saddle: Compensated black graphite / 72mm - 2.83"
 Bridge: Ebony

(Acoustic / Electric models)
 Pickup: Piezo NanoFlex
 Preamp: StudioLåg Plus

Strings: D'addario EXP

DREADNOUGHT

GLA T500D NATURAL

DREADNOUGHT CUTAWAY ELECTRO

GLA T500DCE NATURAL

GLA TL500DCE LEFT-HANDED - NATURAL

AUDITORIUM

GLA T500A NATURAL

AUDITORIUM CUTAWAY ELECTRO

GLA T500ACE NATURAL



ALREADY A CLASSIC

Heavily steeped in the tradition of the classical guitar, the Algam Design Studio took their time and reflected long before proposing an instrument with such irreproachable qualities. The Occitania range is sure to impress with its rich, warm tones and superb playability.

The enchanting sensations that come from the first contact with the guitar are certain to release the emotional expression of the classical guitarist inside us all. A divine symbiosis, amplified with perfection thanks to the professional StudioLâg Plus preamp in the acoustic/electric versions of the range.



3000

OCCEITANIA®

300 SERIES

SPECIFICATIONS

Top: Solid Red Cedar
Back & Sides: Rosewood
Bindings: Black & Ivory
Finish: High Gloss

Neck: Mahogany / High gloss finish
Fingerboard: Indonesian Rosewood
Frets: 19 / Silver-Nickel
Scale: 650mm - 25.60"

Headstock: Rosewood
Machine Heads: Nickel
Nut: Black graphite / 51mm - 2"

Saddle: Flat black graphite / 80mm - 3.15"
Bridge: Indonesian Rosewood

(Acoustic / Electric models)
Pickup: Piezo NanoFlex
Preamp: StudioLåg Plus Nylon

Strings: Savarez

CLASSICAL

GLA OC300 NATURAL

CLASSICAL CUTAWAY ELECTRO

GLA OC300CE NATURAL





4000[®] OCCITANIA[®]

400 SERIES

SPECIFICATIONS

Top: Solid Englemann Spruce
Back & Sides: Rosewood
Bindings: Black & Ivory
Finish: High Gloss

Neck: Mahogany / High gloss finish
Fingerboard: Indonesian Rosewood
Frets: 19 / Silver-Nickel
Scale: 650mm - 25.60"

Headstock: Rosewood
Machine Heads: Nickel
Nut: Black graphite / 51mm - 2"

Saddle: Flat black graphite / 80mm - 3.15"
Bridge: Indonesian Rosewood

(Acoustic / Electric models)
Pickup: Piezo NanoFlex
Preamp: StudioLag Plus Nylon

Strings: Savarez

CLASSICAL

GLA OC400 NATURAL

CLASSICAL CUTAWAY ELECTRO

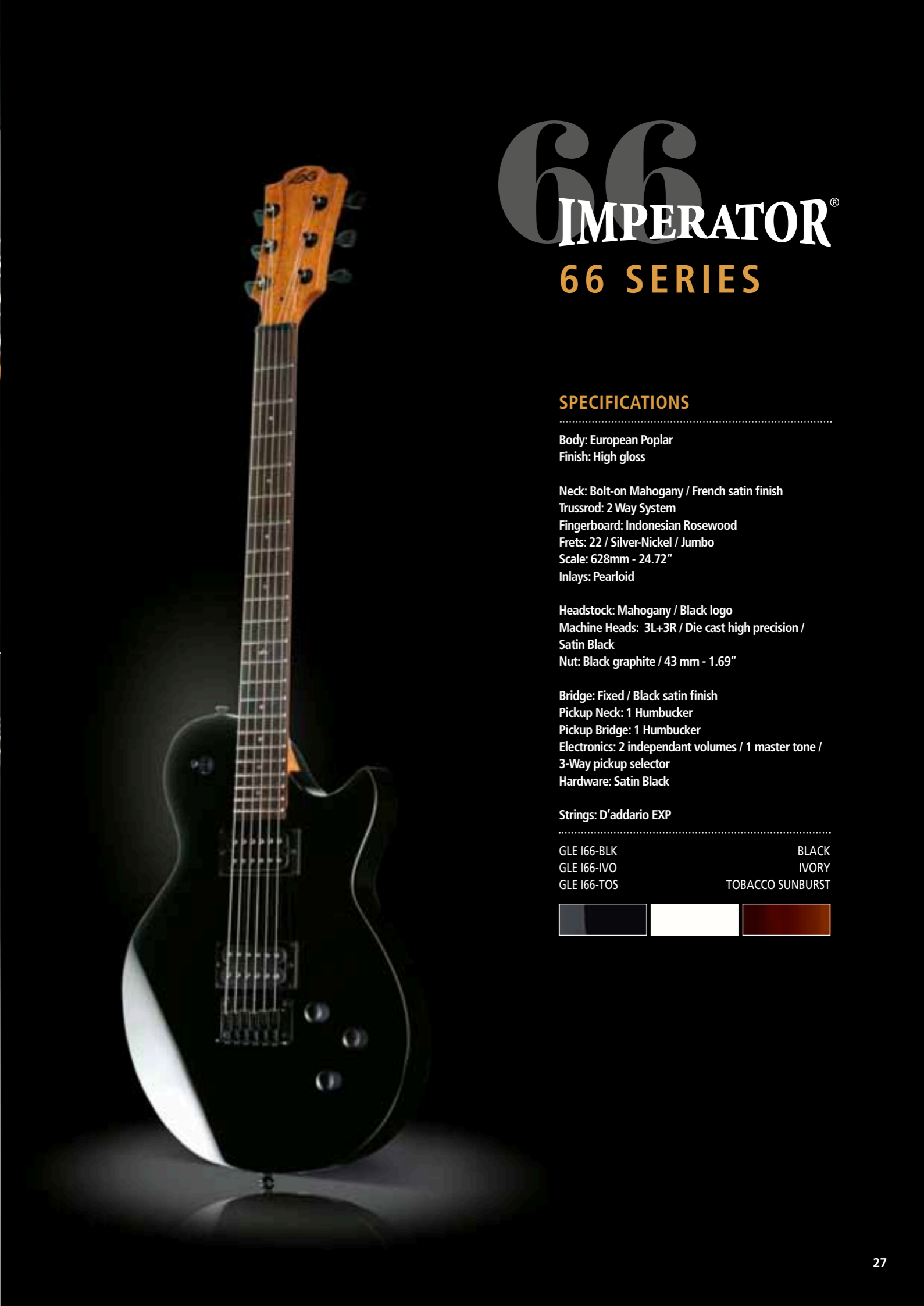
GLA OC400CE NATURAL



IMPERATOR®

TOTAL DOMINATION

The Emperor range puts musicians under its spell. It's the ideal guitar for Rock musicians with a smart style. By associating clean lines and hot pickups with a precise manufacturing process, the Algam Design Studio managed to give guitarists a successful and approachable range of guitars that are designed to dominate on stage. Thanks to its success for several years, the Emperor continues to spread its style, ensuring its long lasting legacy.



66

EMPERATOR®

66 SERIES

SPECIFICATIONS

Body: European Poplar
Finish: High gloss

Neck: Bolt-on Mahogany / French satin finish
Trussrod: 2 Way System
Fingerboard: Indonesian Rosewood
Frets: 22 / Silver-Nickel / Jumbo
Scale: 628mm - 24.72"
Inlays: Pearloid

Headstock: Mahogany / Black logo
Machine Heads: 3L+3R / Die cast high precision / Satin Black
Nut: Black graphite / 43 mm - 1.69"

Bridge: Fixed / Black satin finish
Pickup Neck: 1 Humbucker
Pickup Bridge: 1 Humbucker
Electronics: 2 independant volumes / 1 master tone / 3-Way pickup selector
Hardware: Satin Black

Strings: D'addario EXP

GLE I66-BLK BLACK
GLE I66-IVO IVORY
GLE I66-TOS TOBACCO SUNBURST





100

IMPERATOR®

100 SERIES

SPECIFICATIONS

Body: European Poplar
Finish: High Gloss

Neck: Bolt-on Mahogany / French satin finish
Trussrod: 2 Way system
Fingerboard: Indonesian Rosewood
Frets: 22 / Silver-Nickel / Jumbo
Scale: 628mm - 24.72"
Inlays: Pearloid

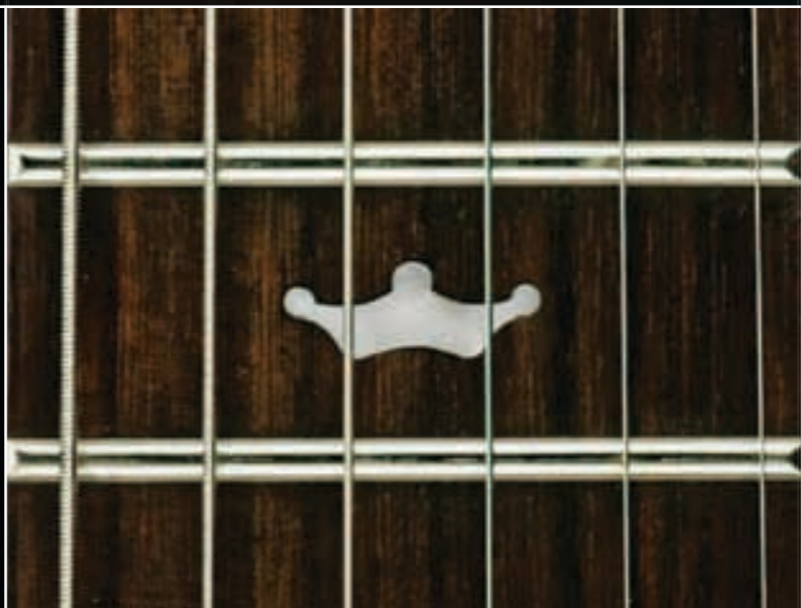
Headstock: Rosewood / Pearloid logo
Machine Heads: 3L+3R / Die cast high precision /
Satin Black
Nut: Black Graphite/ 43 mm - 1.69"

Bridge: Fixed / Black satin finish
Pickup Neck: 1 Alnico Humbucker
Pickup Bridge: 1 Alnico Humbucker
Electronics: 2 independant volumes / 1 master tone /
3-Way pickup selector
Hardware: Satin Black

Strings: D'addario EXP

GLE I100-BLK BLACK
GLE I100-HOS HONEY SHADOW
GLE I100-OPS OLD PORT SHADOW





200

IMPERATOR®

200 SERIES

SPECIFICATIONS

Body: Poplar / Figured Mahogany top
(Except black model)
Bindings: Mahogany and black
Finish: High Gloss

Neck: Set Mahogany / French satin finish
Trussrod: 2 Way System
Fingerboard: Indonesian Rosewood
Frets: 22 / Silver-Nickel / Jumbo
Scale: 628mm - 24.72"
Inlays: Pearloid

Headstock: Rosewood / Pearloid Logo
Machine Heads: 3L+3R / Die cast high precision /
Satin Black
Nut: Black graphite / 43 mm - 1.69"

Bridge: Tunomatic & Stop tailpiece / Black satin finish
Pickup Neck: 1 Duncan Design HB-102-N Humbucker
Pickup Bridge: 1 Duncan Design HB-102-B
Humbucker
Electronics: 2 independant volumes with Push-Pull /
1 master tone / 3-Way pickup selector
Hardware: Satin Black

Strings: D'addario EXP

GLE I200-BLK BLACK
GLE I200-BRS BROWN SHADOW
GLE I200-OPS OLD PORT SHADOW





3000 IMPERATOR®

3000 SERIES

Made in France

SPECIFICATIONS

Body: Solid Mahogany / Solid figured maple top
Bindings: Mahogany and black
Finish: High gloss

Neck: 1 piece mahogany set / French satin finish
Trussrod : 2 Way System
Fingerboard: Ebony
Frets: 22 / Silver-Nickel / Medium
Scale: 629mm - 24.76"
Inlays: Mother of pearl

Headstock: Ebony / Mother of Pearl Logo inlay
Machine Heads: 3L+3R Gotoh High precision / Die Cast / Satin Black
Nut: Black graphite / 43 mm - 1.69"

Bridge: Tunomatic & Stop tailpiece / French satin finish
Pickup Neck: 1 Seymour Duncan PAF 59 humbucker
Pickup Bridge: 1 Seymour Duncan Jeff Beck Humbucker
Electronics: 2 independant volumes with Push-Pull / 1 master tone / 3-Way pickup selector
Hardware: Satin Black

Strings: D'addario EXP
Case: Arkane Crocose

GLV I3000-BST	BLACK SEE THRU
GLV I3000-OPM	OLD PORT MAHOGANY
GLV I3000-SPM	SPALTED MAPLE



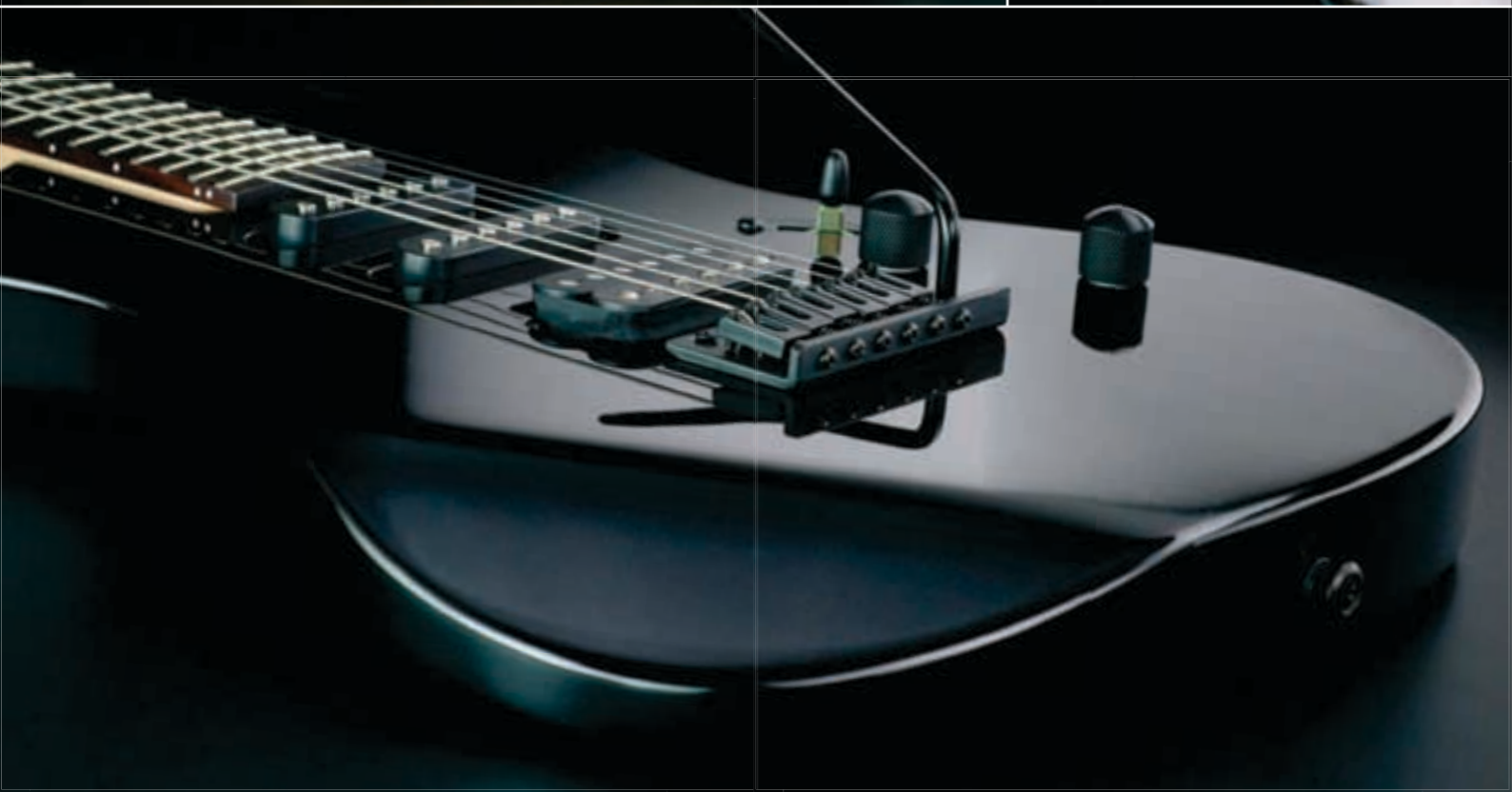


Arkane[®]

THE GUITAR THAT MAKES YOU THE HERO

The Algam Design Studio conceived the Arkane range of guitars to equip guitarists wishing to defend their on-stage inspirations with a real weapon of mass destruction*. Featuring a pure concentration of power, handiness and reliability, its energy comes from its elegant dynamic lines and devastating configuration of pickups.

*No carry permit is required for the possession of an Arkane in public



66 Arkane®

66 SERIES

SPECIFICATIONS

Body: European Poplar
Finish: High gloss

Neck: Bolt-on Maple / French satin finish
Trussrod: 2 Way System
Fingerboard: Indonesian Rosewood
Frets: 24 / Silver-Nickel / Jumbo
Scale: 648mm - 25.51"
Inlays: Pearloid

Headstock: Satin Black / Silver Logo
Machine Heads: 6 in line / Die cast high precision / Satin Black
Nut: Black graphite / 43 mm - 1.69"

Vibrato: Standard Tremolo
Pickup Neck: 2 Single coils
Pickup Bridge: 1 humbucker
Electronics: 1 volume / 1 master tone / 5-Way pickup selector
Hardware: Satin Black

Strings: D'addario EXP

GLE A66-BLK	BLACK
GLE A66-DRD	DARK RED
GLE A66-WHT	WHITE





100

Arkane®

100 SERIES

SPECIFICATIONS

Body: European Poplar / Mahogany top on GRS
Finish: High gloss

Neck: Bolt-on Maple / French satin finish
Trussrod: 2 Way System
Fingerboard: Indonesian Rosewood
Frets: 24 / Silver-Nickel / Jumbo
Scale: 648mm - 25.51"
Inlays: Pearlloid

Headstock: Satin Black / Silver Logo
Machine Heads: 6 in line / Die cast high precision/
Satin Black
Nut: Black graphite / 43 mm - 1.69"

Bridge: Fixed / Black satin finish
Pickup Neck: 1 Duncan Design HB-103-N Humbucker
Pickup Bridge: 1 Duncan Design HB-103-B
Humbucker
Electronics: 1 volume / 1 master tone / 3-Way pickup
selector
Hardware: Satin Black

Strings: D'addario EXP

GLE A100-BLK
GLE A100-GRS

BLACK
GOTHIC RED SHADOW





2000

Arkane®

200 SERIES

SPECIFICATIONS

Body: European Poplar / Figured mahogany top
(Except black model)
Bindings: Maple & Black
Finish: High gloss

Neck: Bolt-on maple / French satin finish
Trussrod: 2 Way system
Fingerboard: Indonesian Rosewood
Frets: 24 / Silver-Nickel / Jumbo
Scale: 648mm - 25.51"
Inlays: Pearloid

Headstock: Satin Black / Silver Logo
Machine Heads: 6 in line / Die cast high precision /
Satin Black
Nut: Floyd Rose locking system / Black / 43 mm - 1.69"

Vibrato: Floyd Rose Spécial
Pickup Neck: 1 EMG HZ SA-1 Humbucker
Pickup Bridge: 1 EMG HZTB-1 Humbucker
Electronics: 1 volume / 1 master tone with Push-Pull /
5-way pickup selector
Hardware: Satin Black

Strings: D'addario EXP

GLE A200-BLK BLACK
GLE A200-BRS BROWN SHADOW





30000[®] Arkane

3000 SERIES

Made in France

SPECIFICATIONS

Body: Solid Mahogany / Solid Figured Maple top
 Bindings: Maple and black
 Finish: High gloss

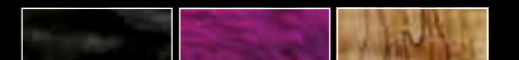
Neck: Bolt-on Hard Rock Canadian Maple /
 French satin finish
 Fingerboard: Ebony
 Frets: 24 / Silver-Nickel / Jumbo
 Scale: 648mm - 25.51"
 Inlays: Mother of pearl

Headstock: Ebony / Mother of Pearl Logo inlay
 Machine Heads: 6 in line Gotoh high precision /
 Die cast / Satin Black
 Nut: Floyd Rose locking system / Black / 43 mm - 1.69"

Vibrato: Floyd Rose Spécial
 Pickup Neck: 1 EMG 89 Neck humbucker
 Pickup Bridge: 1 EMG 81 TW Bridge Humbucker
 Electronics: 1 volume / 1 master tone with Push-Pull /
 3-way pickup selector
 Hardware: Satin Black

Strings: D'addario EXP
 Case: Arkane Crocose

GLV A3000-BST	BLACK SEE THRU
GLV A3000-DPU	DEEP PURPLE
GLV A3000-SPM	SPALTED MAPLE



WORKSHOP BÉDARIEUX FRANCE

In Bédarieux in the South of France, the know-how of the master instrument maker Michel Lâg and his team of passionate experts continue to make the pride of the Occitanian brand.

Their workshop blends the perfected traditional methods of instrument building along with modern tools and technology to create the epitome of fine musical instruments.

Supported by the talented designers of the Algam Design Studio, the most outlandish and eccentric projects are always imagined, conceived and realized with the same obsessive attention to detail and perfection.

Made in France



CUSTOM & 3000 SERIES:

With over 30 years of knowledge, Lâg Guitars suggests that the most demanding guitarists should consider conceiving their own guitar by taking advantage of the on-line configurator that can be found at lagguitars.com

SIGNATURES:

Lâg Stringed-instrument makers in the French workshop in Bédarieux, create guitars which correspond perfectly to the acoustic and aesthetic expectations of the artists for which they are made.

ARTISTS:

Since the creation of the very first Lâg guitar by the master instrument maker with the same name, many artists have come from varied musical backgrounds worldwide to be seduced by the singular character of the brand, becoming the real ambassadors.

LÂG FRIENDS



JEAN-FÉLIX LALANNE



DOWN
PHIL ANSELMO



QUEEN
BRIAN MAY



OZZY - FIREWIND
GUS G



NEVERMORE
JEFF LOOMIS



STONE SOUR
JOSH RAND



YAEL NAIM



KAMELOT
THOMAS YOUNGBLOOD



MICHEL HAUMONT

ACHARD CYRIL - ALRIC PHILY - ARZEL GILDAS - AUFRAY HUGUES - AYACHE JENNIFER (SUPERBUS) - BARNEY PHIL - BENSON BRENDAN - BERNARD GUILLAUME (KLONE) - BERTIGNAC LOUIS - BLACK NEAL - BLANC MAO - CHAB LAURA (THE VOICE) - CHEDID MATTHIEU - CEDRO BOB - CHESNEAU DIDIER (HEADLINE) - CONSTANTINE (PRIMAL FEAR) - DINNAT JEFF

DORBEKO MAXIM - DUTRONC THOMAS - ENGELIN NICLAS (IN FLAMES) - FELTIN JULIEN - FILLOL OLIVIER (FACE TO FACE) - FOCONE PATRICE (SUPERBUS) - GIANOLA JGOR (UDO) - GRACE AND THE VICTORY RIDERS - HARMONIC GENERATOR - HEDGER CHARLES (CRADLE OF FILTH) - HOLLOWAY JASON (ATHEIST) - IN FLAMES - JARRE JEAN MICHEL - JIOSA DENNY - KENY

LÂG FRIENDS



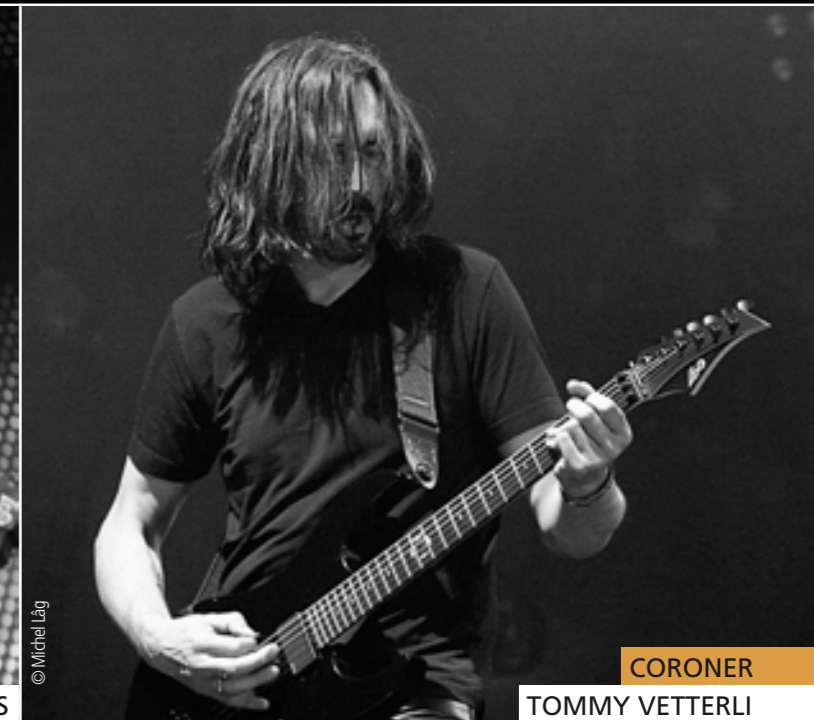
MOTORHEAD
PHIL CAMPBELL



ADAGIO
STÉPHAN FORTÉ



KEZIAH JONES



CORONER
TOMMY VETTERLI



LIZZY BORDEN
DARIO LORINA



CHRIS GEORGE



PAT O'MAY

KOSTEROVA JULIA - LABORDE CHRISTIAN - LALANNE FRANCIS - LARIO JORGE - LE BIGOT GILLES
- LE DEUNFF DAVID (C2C) - LEROY NOLWENN - LIV KRISTINE (LEAVES EYE'S) - LIZZARD - LORINA
DARIO (LIZZY BORDEN) - MADER LOGAN (PRODUCER, MACHINE HEAD) - MAMAC (JEAN-
MARC LEMERRE) - MARCHAND NICOLAS («NAWO») - MARS MELISSA - MENIKETTI DAVE (Y&T)

MI TIERRA - MOUSTAKI GEORGES - NYMANN JOHN - PERRAUDIN DAVID - PETROSSI DUSHAN
(IRON MASK) - PONTET THIERRY - RAINEY JASON (SACRED REICH) - RAMOS BRUNO (MANIGANCE)
- RITT AXEL (GRAVE DIGGER) - ROELANTS WIM - SASSY YOSSI (ORPHANED LAND) - SERANE KENNY
- SHERIDAN TONY - SOLORAZAF - TRAORE ROKIA - VIANA AMEN - YOUNG ADAM (OWL CITY)



IT SEEMS
OUR OBSESSION WITH
DETAILS
HAS BEEN NOTICED...



DECEMBER 2012
PRODUCT EXCELLENCE AWARD - MUSIC INC
" The easiest sale we make at the store today and simply without equal in the marketplace "



JULY 2012
BEST IN SHOW - SUMMER NAMM
" It's beautiful, gorgeous, great sounding, well set-up, high quality products "



DECEMBER 2011
DEALERS CHOICE AWARD - MMR
" Remarkably high quality instruments with a top-notch European lineage "



JANUARY 2011
BEST IN SHOW - WINTER NAMM
" Even at that level (of price), they have carved headstocks, really beautiful binding and solid woods "



JANUARY 2010
BEST IN SHOW - WINTER NAMM
" They have acoustic guitars (...) that sound and play like guitars at twice that price "



== IT'S ALL ABOUT DETAILS ==



==== IT'S ALL ABOUT DETAILS ====

> **Headquarters:** ALGAM, 2 rue de Milan 44484 Thouaré cedex France

> **Factory:** LAG Guitars - Rte de St Pons 34600 Bédarieux - France

> **Distributors:** Details on lagguitars.com

International Trademarks: Låg, Tramontane, Occitania, Arkane, Imperator names and Occitania Cross design are registered Trademarks by ALGAM (Musical Instruments class).
International Patterns: Låg rosette design, Låg headstock shapes and Låg acoustic guitar bridge are registered Patterns by ALGAM.
Låg specifications are subject to change in order to search for perfection permanently.